



T3 TACOMA Push Bar

installation instructions

IMPORTANT:

Thank you for purchasing this CBI product. Please read through this entire document before proceeding with installation. If you are not confident in your mechanical skills, please seek the help of a professional to perform the installation. Check your packages immediately upon arrival to ensure that everything listed is included, and to check for damage during shipping. If anything is missing or damaged, or if you need technical assistance with any aspect of this installation, call CBI at (208) 528-0664 as soon as possible.

Hardware:

- ☐ (7) 3/8 x 1 SS bolts
- ☐ (4) 3/8 x 1 Hex bolts
- ☐ (6) 3/8 nuts
- ☐ (4) 3/8 flat washers



Applications

These installation instructions apply to the following CBI Off Road products

T3 PB

2016-Present Tacoma Push Bar

IMPORTANT INFO:

If your CBI product comes as unpainted, bare steel or aluminum. You will want to either powder coat or paint prior to final installation, however it is very important to PRE-INSTALL the unpainted product first, following these instructions, BEFORE painting or powder coating any of the components! This will ensure that all parts are correct and any incidental trimming or drilling will have been done prior to coating. Also, it will give you a practice run to familiarize yourself with the process, to lessen the likelihood of damaging the finish during final installation. CBI Off Road is NOT RESPONSIBLE for paint or powder coating costs, damage to paint or powder coating, or costs associated with inadvertently painting or powder coating components that are defective or were shipped or assembled in error. It is the customer's responsibility to pre-install and verify that all parts are correct prior to paint or powder coat.

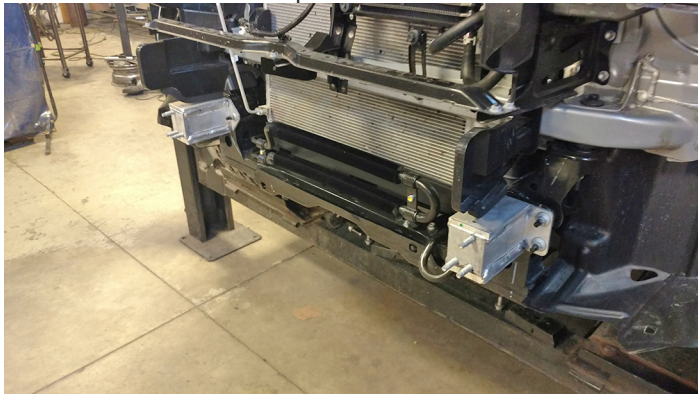
For questions or further help:

Call: 866-522-0697
Email: info@cbioffroadfab.com

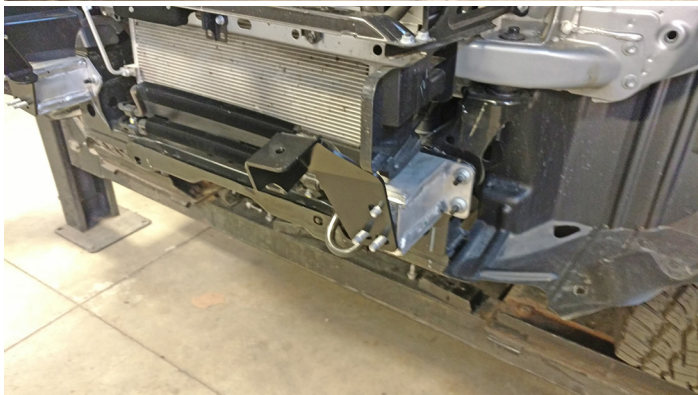
•Installation

1. Remove plastic bumper

2. Remove aluminum bumper – Photo A



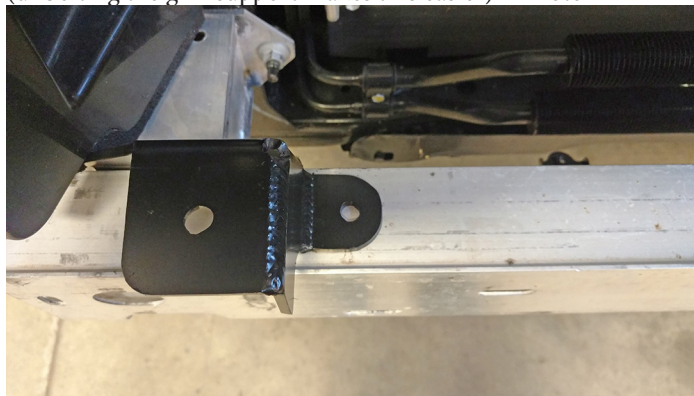
3. Slip mounting brackets over the bumper mounting bolts.
– Photos B & C



4. Slip bumper over the brackets and tighten down nuts.
– Photo D



5. Drill out aluminum bumper to accept the 3/8" bolts
(unbolting the grill support makes this easier) – Photo E



6. Put bolts in and tighten down. – Photo F



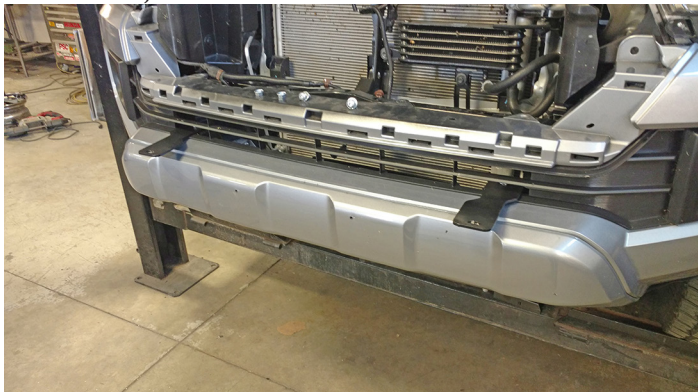
7. Bolt extension brackets on using 3/8 x 3/4 hardware as shown
just using the bolts. – Photo G



8. Re-install plastic impact bumper – Photo H



9. Install plastic bumper shell, be careful to slip push bar extension brackets through the widest openings in bumper grill – Photos I & J



10. Hang the push bar on the mounts, line up holes and loosely tighten bolts.–Photo K



11. Swing the push bar up into place on the front cross member and using the bolts that hold the little horns in, loosely thread them in. now center the push bar and tighten these bolts down. – Photo L



12. The upper mounting bolts can now be tightened.–Install the grill.

13. Now is a good time to install the lights before the center plate is bolted up.

14. Install “u” nuts on tabs for center plate – Photos M & N



15. Install license plate on center plate and bolt center plate to push bar.